

XREF QUICK REFERENCE GUIDE

TO FIND:

CLICK ON:

Cross Reference (Part # to Part #)XREF	XR
HVAC equipment by model #HVAC	HV
Ice makers by model #ICE	IC
Competitive analysis between two HVAC modelsCOMP	CO
Material safety data sheetsMSDS	MS
Distributors & suppliers	SUPPLIER	SU
Exact replacements for parts		EX
Specifications for motors, contactors, fan blades, compressors, & blower wheels		SP

Search by SPECIFICATIONS in [SP](#): (Note - enter specs with a space between each phrase)

USE THE FOLLOWING FORMAT TO ENTER PHRASES INTO THE SPECIFICATIONS WINDOW:

Motors: 1/3HP 1.5HP 115V 208-230V 1075RPM PSC SHADE 48 56 CW SE REV BB SLV OD TENV 2SPD 3PH AUTO NP RES STUD, etc.

Contactors: 2P FLA30A LRA125A COIL24V, etc.

Fan Blades: D20 P27 5BLD AL CW, etc.

Compressors: 115V 1PH RLA7.7A LRA38A 50HZ, etc.

Blower Wheels: D15 W6 B0.5 REV CW, etc.

WILD CARDS: 10*RPM (to find anything within the 1000-1099RPM range in SPECIFICATIONS)
2*V (to find anything within the 200-299 volt range in SPECIFICATIONS)
5KCP* (* substitutes multiple characters) returns all parts that start with 5KCP
3ART?S2? (? substitutes each single unknown character)

Find SPECIFICATIONS in [SP](#) for motors, contactors, fan blades, compressors, & blower wheels:

Motors: Type <D-158>; click <OK> or hit enter to see the motor specs
Contactors: Type <DP2030A1003>; click <OK> or hit enter to see the contactor specs
Fan Blades: Type <1050852>; click <OK> or hit enter to see the fan blade specs
Compressors: Type <SFA5611EXG>; click <OK> or hit enter to see the compressor specs
Blower Wheels: Type <2-6088>; click <OK> or hit enter to see the blower wheel specs

XREF ABBREVIATIONS: [XR](#) to find the definition of an abbreviation:

Type <ABBREV CH> to look up the "CH"; Click <OK>
Type <ABBREV TENV> to look up abbrev for "TENV"; Click <OK>
Type <ABBREV SLV> to look up abbrev for "SLV"; Click <OK>

LINK FROM HVAC OEM PARTS → BACK TO XREF [HV](#) to [XR](#):

Click [HV](#); <Open Query>; Type <38EH030300SM>; Click <OK>
Click on <HC35SL231> to find all replacements for this motor in [XR](#)

HVAC ABBREVIATIONS [HV](#): Click on any part abbreviation to learn its meaning (SW PRSS, etc.)

XREF QUICK REFERENCE GUIDE

KITS: Expand kits in **HV** by looking up <KIT 20422201> in a query; Click <OK> and scroll down past any model part hits to the kit parts record

CODES: Type <CODE FASCO 22> in an **XR** query to look up a motor code; Click <OK> and scroll down to the record with CODE FASCO 22 in the OEM field to view its definition

RULES/EXCEPTIONS:

AMANA "D69731-009" will be in as <D69731-9> (Nonessential zeros are eliminated)
YORK UPG "S1-1TVM4F1" will be in as <1TVM4F1> (S1- is removed)
YORK UPG "S1-02420043700" will be in as <024-20043-700> (S1- is removed and hyphens added)
EMERSON "K1009" will be in as <1009>
FASCO "D158" will be in as: <D-158>
GE "WE0017X0032" will be in as "WE17X32" (Nonessential zeros are eliminated)
UNIVERSAL "90" will be in as: <U-90>
Letter "O" in a part/model # becomes a zero "0": TRANE "MOT1119" becomes <M0T-1119>
List of some brands put in "AS-IS": Carrier, Lennox, Rheem, Tecumseh, Baldor, & Lau

NAVIGATIONAL TOOLS:



Query (binoculars) allows you to search for information in the current database



Print allows you to print from the MSDS database only



Trail (footprints) allows viewing of your entire query history made in an open database. Open your XREF **XR** database first before clicking on your <TRAIL> icon to view all of the queries you have made in that database; likewise, open your HVAC **HV** database first before clicking on your <TRAIL> icon to view queries you have made in that database and so forth



Back/Forward (single left or right arrow) goes to previous or next query results in current open database



Previous/Next Hit (double left or right arrow) scrolls up or down through your hits in a query



Query Selection & Clear Query (not applicable)

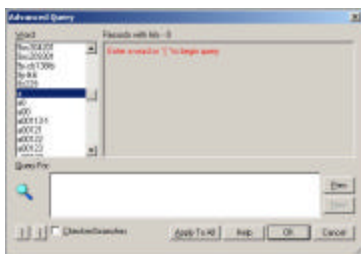


Query Box lists open database's previous queries; click arrow to access



Previous/Next Partition Hit (small double left or right arrow) scrolls up or down through records in a query much like the Previous/Next Hit buttons

QUERY WINDOW TOOLS: (after you hit space bar, F2, or click binoculars to open your query window)



<PREV> go back through previous queries within open database

<NEXT> go forward through previous queries within open database

<OK> to view the results of your query (or hit enter)

<CANCEL> to close out your query window (or hit escape)

FOR MORE INFO:

www.xrefpub.com; info@xrefpub.com

© Copyright 1990-2008, XREF™, All Rights Reserved