

# **XREF™ “HVAC” ENCYCLOPEDIA MANUAL**

## **I. Introduction**

Thank you for subscribing to the XREF™ “HVAC” Encyclopedia. The internal design goes far beyond traditional software data searches by logging every word and number into a large internal database. The number of times any word or part number appears is also kept track of, allowing XREF™ to recall any information in milliseconds upon request. In 30 minutes, you will master the basics of utilizing this program and save yourself endless hours in future cross-referencing endeavors because XREF™ is the entire HVAC/R industry’s ULTIMATE CROSS-REFERENCE!

There are 6 parts to this program: XREF, HVAC, ICE, MSDS, SUPPLIER and COMP. If you are looking for part number to part number replacements (elements, motors, switches, controls, compressors, contactors, fan blades, blower wheels, etc.), you MUST be in the “XREF” database. If you are looking for the component part for a given model # of an air conditioner or heater, then you need to be in the “HVAC” database. If you need to replace HVAC equipment with another comparable brand of HVAC equipment, then you need to be in the “COMP” database. For components related to a specific icemaker by its model number, you must be in the “ICE” (ice maker) database. To find your area’s closest supplier of a particular brand, use the “SUPPLIER” database. “MSDS” contains Material Safety Data Sheets relevant to the HVAC/R industry.

We hope you will find this to be **the solution** to your daily challenges of meeting your cross referencing needs in a time efficient manner.

## **II. Installation**

### **a. Requirements**

- IBM/PC Compatible (200MHZ)
- Windows 95/98/2000/M.E./NT/ XP/Vista/7
- DVD ROM drive
- 800X600 16 color monitor
- Bi-directional parallel port or USB port

### **b. Installation Procedure**

#### **1. Standalone CD**

- Turn your computer on and set to correct date and time
- Plug the attached dongle into your computer’s parallel port or USB port
- Insert XREF™ “HVAC” DVD into your DVD drive
- Auto Run should guide you through the installation procedure
- If auto run does not initiate, navigate to the DVD ROM drive, right click on the drive and select ‘explore’ or ‘open’, and double click on setup.exe
- For Serial number, type 112

1

**By XREF™ Publishing Co., Inc.**

Phone# (360) 385-4279 (8am-5pm PST), Fax # (360) 385-4417

[info@xrefpub.com](mailto:info@xrefpub.com), [www.xrefpub.com](http://www.xrefpub.com)

(c) Copyright 1990-2012, XREF™, All Rights Reserved

Manual\_W112X-H.DOC

# **XREF™ “HVAC” ENCYCLOPEDIA MANUAL**

- Select CD (Minimum, Network) & Follow Prompts

## **2. Standalone Hard Disk**

- Turn your computer on and set to correct date and time
- Plug the attached dongle into your computer's parallel or USB port
- Insert XREF™ “HVAC” DVD into your DVD drive
- Auto Run will guide you through the installation procedure
- If auto run does not initiate, navigate to the DVD ROM drive, right click on the drive and select 'explore' or 'open', and double click on setup.exe
- For Serial number, type 112
- Select Hard Disk (Full) & Follow Prompts
- Installation may take anywhere from 5-25 minutes

### **c. Networking**

You may install XREF™ onto your server to access the program through your network. To install XREF™ onto your server, see procedures above for the “Hard disk” installation. Once XREF™ is installed onto your server, follow these next steps to setup each work station:

- Turn your computer on and set to correct date and time
- Plug the attached dongle into your computer's parallel port
- Through Network neighborhood, access server's hard disk.
- Click on “XREF” folder
- Click on “CONT” folder
- Click on “Setup.exe” to allow Auto Run to guide you through the installation procedure
- For Serial number, type 112
- Select CD (Minimum, Network) & Follow Prompts

### **d. Starting XREF™**

Double click on your desktop's “XREF HVAC” shortcut icon (created during installation) to get started!

## **III. Main/HOME Screen Display/Operational Tools**

Let's begin by first getting acquainted with your main screen page:

### **a. Database Entries**

The 6 databases are accessible by 2 sets of icons. The top set is as follows: XR (XREF), HV (HVAC), IC (ICE), CO (COMP), MS (MSDS), & SU (SUPPLIER). Any one of these databases can be accessed from anywhere in the program provided a Query screen is not already brought up. If this is so and you

2

**By XREF™ Publishing Co., Inc.**

Phone# (360) 385-4279 (8am-5pm PST), Fax # (360) 385-4417

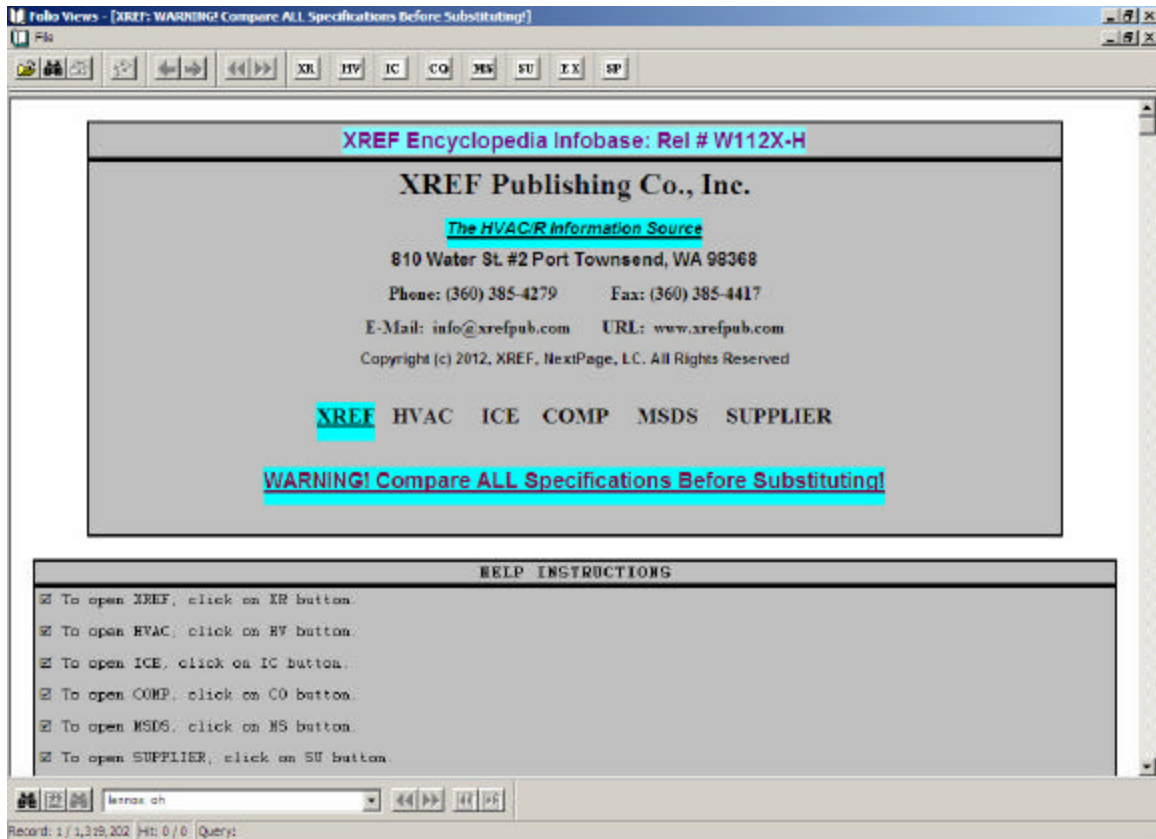
[info@xrefpub.com](mailto:info@xrefpub.com), [www.xrefpub.com](http://www.xrefpub.com)

(c) Copyright 1990-2012, XREF™, All Rights Reserved

Manual\_W112X-H.DOC

# XREF™ “HVAC” ENCYCLOPEDIA MANUAL

wish to enter a different database, close out your Query screen before clicking on a different upper database icon.



The alternate set of database entry icons are on the front pages of each of the databases. You can verify this in 4 places: the very top blue heading, another one next to your “Start” button (“Folio Views – {XREF...}”), and right above our company name on each front page. Also, the active database will be highlighted on its front page. Find each of these 4 places in XREF™’s front page above.

## **b. Query Templates**

3

### **By XREF™ Publishing Co., Inc.**

Phone# (360) 385-4279 (8am-5pm PST), Fax # (360) 385-4417

[info@xrefpub.com](mailto:info@xrefpub.com), [www.xrefpub.com](http://www.xrefpub.com)

(c) Copyright 1990-2012, XREF™, All Rights Reserved

Manual\_W112X-H.DOC

## **XREF™ “HVAC” ENCYCLOPEDIA MANUAL**

The “Exact” & “Specifications” Query Template features allow execution of a much more focused and efficient search. Details are provided in our Tutorial section.

### **c. Navigational Tools (TOP)**

From left to right, your navigational tools are as follows:

- **Query** (Binoculars) allows you to make a Query
- **Print** allows you to print from the MSDS database
- **Trail** (footprints/puppy paws) allows viewing of an entire query path made in an open database. Open your XREF™ database first before clicking on your <TRAIL> icon to view the queries you have made in that database; likewise, open your HVAC database first before clicking on your <TRAIL> icon to view queries made in that database and so forth.
- **Go Back** (single left arrow) goes to previous page in current open database
- **Go Forward** (single right arrow) goes to next page in current open database
- **Previous Hit** (double left arrow) scrolls up to your previous hit of a Query result
- **Next Hit** (double right arrow) scrolls down to your next hit of a Query result

### **d. Navigational Tools (BOTTOM)**

From left to right, your navigational tools are as follows:

- **Query** (binoculars) opens up a query in your current database
- **Query Selection & Clear Query** (not applicable)
- **Query Tool** lists open database’s previously made queries; find/click to access
- **Previous Hit** (large double left arrow) takes you to your previous hit of a Query result
- **Next Hit** (large double right arrow) takes you to your next hit of a Query result
- **Previous Partition Hit** (small double left arrow) scrolls up to your previous hit record
- **Next Partition Hit** (small double right arrow) scrolls down to your next hit record

### **e. Features in Your Advanced Query Window**

Click on your Query (binoculars) to view your Advanced Query Window. The XREF™ cross-referencing product’s Search Engine is custom designed; you will only click:

- **<PREV>** to go back in your list of previously executed Queries within your open database
- **<NEXT>** to go forward in your list of previously executed Queries within your open database
- **<OK>** to view the results of your Query
- **<CANCEL>** to close out your Query window

4

**By XREF™ Publishing Co., Inc.**

Phone# (360) 385-4279 (8am-5pm PST), Fax # (360) 385-4417

[info@xrefpub.com](mailto:info@xrefpub.com), [www.xrefpub.com](http://www.xrefpub.com)

(c) Copyright 1990-2012, XREF™, All Rights Reserved

Manual\_W112X-H.DOC

# **XREF™ “HVAC” ENCYCLOPEDIA MANUAL**

## **f. Query Status**

Displayed in the lower left corner are Record & Hit Statuses and your current Query request.

## **IV. Tutorial/Making Queries**

Before starting these examples, please note that there are multiple ways of making a Query:

1. Pressing your <SPACE BAR>
2. Pressing <F2> key
3. Clicking on your lower or upper binoculars

Instead of telling you which method to use to open up a query, this manual will simply say <OPEN QUERY> (except for the special Exact and Specifications Template Queries). Choose the method that works best for you as you follow these step-by-step examples. Now let's master the basics by putting your operational knowledge to work!

**HINT: AFTER ENTERING QUERY, PRESS <ENTER> OR CLICK <OK> TO VIEW RESULTS**

### **a. XREF™ Database**

#### **i. Simple Query {XR}**

The XREF™ database contains part number to part number replacements for elements, motors, switches, controls, compressors, contactors, fan blades, blower wheels, etc. You would always be using “XREF” when searching for a known part number for the entire HVAC/R industry.

<OPEN QUERY> to begin your first Query example. Your screen is split into three different windows. The “Word:” section lists every word and part number in alpha/numeric order. The “Records with hits” section shows results of your request. You enter your request in the “Query For:” section.

#### **Example #1:**

1. Type <D-156> (without the < or > characters)
2. Within a split second, your computer found "D-156" in 135 matches
3. Click <OK>

Your screen will change into full view and display all data that contains "d-156". Your requested data is highlighted throughout the screen. Your lower left Record & Hit counters show 1/135. As you move your cursor downward, this indicates where you are within the 135 occurrences. Click the scroll bar downward on the right side of your screen so you can see how it is affecting the counter.

Each data record is separated by a white horizontal break and should be considered as **NON RELATED TO EACH OTHER**. The same part number may be listed in several locations. In many

5

### **By XREF™ Publishing Co., Inc.**

Phone# (360) 385-4279 (8am-5pm PST), Fax # (360) 385-4417

[info@xrefpub.com](mailto:info@xrefpub.com), [www.xrefpub.com](http://www.xrefpub.com)

(c) Copyright 1990-2012, XREF™, All Rights Reserved

Manual\_W112X-H.DOC

## **XREF™ “HVAC” ENCYCLOPEDIA MANUAL**

cases, you may wish to narrow your selection criteria. This is called “Finding Exact Replacements”. Please continue with the next example.

### **ii. Find Exact Replacements {XR}**

Let's use one of these 135 occurrences of "D-156" to find an exact replacement:

#### **Example #2:**

1. Click on any occurrence of <D-156>
2. Notice that this grabbed <D-156> and brought back only records where this number is in the crossed-from (OEM) field

You are presented with a direct replacement(s) and specifications of the original part number (if available). You can choose from a much narrower and safer selection of replacement(s).

### **iii. Exclusion/Selection of Specific Brands {XR}**

What happens when your screen is cluttered with unwanted brands you do not carry or do not have access to? Let's take the same "D-156" for the following example:

#### **Example #3:**

1. <OPEN QUERY>
2. Type in <D-156>

Your company may only handle Johnstone Supply parts:

3. After D-156, press <SPACE BAR>, and type in <JS>
4. Your computer will search through your database, matching “D-156” 135 times and JS (code for Johnstone Supply Co) 67,631 times
5. Click <OK>

Data is highlighted for easy selection anywhere the "D-156" and "JS" codes appear together in the same record. The scope has been narrowed down to 20 matches as noted by the computer's lower left Record/Hit tabulations.

### **iv. Exact Template {EX}**

Let's do a Query for <D-156> using your Exact Template:

#### **Example #4:**

1. Click on your <EX> icon to open up your Exact Query template
2. Type in <D-156>
3. Click <OK>

6

### **By XREF™ Publishing Co., Inc.**

Phone# (360) 385-4279 (8am-5pm PST), Fax # (360) 385-4417

[info@xrefpub.com](mailto:info@xrefpub.com), [www.xrefpub.com](http://www.xrefpub.com)

(c) Copyright 1990-2012, XREF™, All Rights Reserved

Manual\_W112X-H.DOC

# **XREF™ “HVAC” ENCYCLOPEDIA MANUAL**

You are immediately shown only available exact replacements and specifications.

## **v. Search Motors By Specifications {SP}**

XREF™ is enhanced with a special feature that allows you to select motors, compressors, fan blades, blower wheels and contactors by specifications to the brand of your choice. You may enter any of the specifications in any sequence. However, for faster results, I recommend the basic information be entered first: HP, Volts, RPM.

Let's search for a motor that meets the following specs: 1/4HP, 208-230V, 1075RPM, GE

### **Example # 5:**

1. Click <SP>
2. Type <1/4HP> <SPACE BAR>
3. Type <208-230V> <SPACE BAR>
4. Type <1075RPM> <SPACE BAR>
5. Type <GE> for General Electric brand
6. Click <OK> to see the results of your query

Your ability to fulfill your customer's need has been broadened because you've increased your chances of finding possible replacements (by 83 times!).

Let's search for a motor that meets the following specs: 3.3A, CW, OD, 1SPD.

### **Example # 6:**

1. Click <SP>
2. Type <3.3A> <SPACE BAR>
3. Type <CW> <SPACE BAR>
4. Type <OD> <SPACE BAR>
5. Type <1SPD>
6. Click <OK>

XREF™ will immediately list 18 matches that meet the above criteria.

## **vi. Search Fan Blades By Specifications {SP}**

XREF™ has the capability to identify fan blades and blower wheels not just by part numbers but by specifications as well.

Let's look up a Torin fan blade by the following specs:

7

### **By XREF™ Publishing Co., Inc.**

Phone# (360) 385-4279 (8am-5pm PST), Fax # (360) 385-4417

[info@xrefpub.com](mailto:info@xrefpub.com), [www.xrefpub.com](http://www.xrefpub.com)

(c) Copyright 1990-2012, XREF™, All Rights Reserved

Manual\_W112X-H.DOC

# **XREF™ “HVAC” ENCYCLOPEDIA MANUAL**

8", CLOCKWISE ROTATION, 40 PITCH, 5 BLADES, ALUMINUM

## **Example # 7:**

1. Click on <SP> to open up your Query
2. Type <D8> <SPACE BAR>
3. Type <CW> <SPACE BAR>
4. Type <P40> <SPACE BAR>
5. Type <5BLD> <SPACE BAR>
6. Type <AL>
7. Click <OK>

Computer will display 4 blades that meet the above criteria.

## **vii. Search Contactors By Specifications {SP}**

XREF™ can identify contactors not just by part numbers, but by specifications as well.

Let's look up a Honeywell (HW) contactor by the following specs:

2 Pole, 30A, COIL VOLTAGE 24V

## **Example # 8:**

8. Click on <SP> to open up your Query
9. Type <2P> <SPACE BAR>
10. Type <FLA30A> <SPACE BAR>
11. Type <COIL24V> <SPACE BAR>
12. Type <HW> (For Honeywell)
13. Click <OK>

Computer will display 5 contactors that meet the above criteria.

## **viii. Requesting Specifications for Motors {SP}**

XREF™ will allow you to request specifications for many special, as well as standard stock motors. For this exercise, let's request data for a Marathon # X000:

## **Example # 9:**

1. Click on <SP> to open up your Specifications Query
2. Type <X000>
3. Click <OK>

8

### **By XREF™ Publishing Co., Inc.**

Phone# (360) 385-4279 (8am-5pm PST), Fax # (360) 385-4417

[info@xrefpub.com](mailto:info@xrefpub.com), [www.xrefpub.com](http://www.xrefpub.com)

(c) Copyright 1990-2012, XREF™, All Rights Reserved

Manual\_W112X-H.DOC

# **XREF™ “HVAC” ENCYCLOPEDIA MANUAL**

XREF™ will display the specifications for the X000 motor.

## **ix. Requesting Specifications for Fan Blades {SP}**

With XREF™ you can request specifications for many special and standard fan blades and blower wheels. For this exercise, let's request the data for a Torin # 0U841 (The first character is zero):

### **Example # 10:**

1. Click on <SP> to open up your Specifications Query
2. Type <0U841>
3. Click <OK>

XREF™ will display the specifications of a Torin # 0U841 blade.

## **b. HVAC Database {HV}**

XREF™ "HVAC" has the capability to provide information for more than 280,000 HVAC/R models. In addition to model number to OEM part number crosses, it covers every aspect of part number cross-references including motors, controls, gaskets, sensors, v-belts, compressors, etc. You need not search 15 different manuals for part cross-references. XREF™ "HVAC" has information that is available throughout the HVAC/R industry!

### **i. Search for Models on HVAC Equipment {HV}**

You may know the equipment model number and need to look up OEM part numbers. Or you may have an OEM part number and need to determine where that part is being used. In many situations, you are presented with no more than the equipment model number. Remember, for HVAC-related equipment look up, you MUST be in the "HVAC" database:

### **Example # 11:**

1. Click on your <HV> icon at the top

Now you are presented with the title page for the HVAC database. Notice that the header in the top, blue strip and the footer down below next to the start button "Folio Views – [HVAC:..." tell you that you are in the HVAC database. "HVAC" is also highlighted on its front page.

2. <OPEN QUERY>

For this exercise, let's look up all the information on Carrier model # 38EH030300SM.

3. Type <38EH030300SM> (Carrier model #) and click <OK>

You are presented with a full view of all the functional parts for this model. The requested model number is clearly highlighted on your screen. In the upper right hand corner under SOURCE, you will find the source of our data. It may be very useful in case you need to refer back to it for clarification

9

### **By XREF™ Publishing Co., Inc.**

Phone# (360) 385-4279 (8am-5pm PST), Fax # (360) 385-4417

[info@xrefpub.com](mailto:info@xrefpub.com), [www.xrefpub.com](http://www.xrefpub.com)

(c) Copyright 1990-2012, XREF™, All Rights Reserved

## **XREF™ “HVAC” ENCYCLOPEDIA MANUAL**

or to locate miscellaneous, non-functional parts. Certain fields are blank for a reason: it means certain parts are not used or listed on this model.

### **ii. Search for Components by Description {HV}**

Let's request a condenser motor for the same model # 38EH030300SM by description.

#### **Example # 12:**

1. <OPEN QUERY>
2. Now click on your <PREV> icon to retrieve your last Query
3. Hit the <END> key; press the <SPACE BAR>
4. Type <MTR COND> (abbreviation for condenser motor)
5. Click <OK>

All occurrences of “MTR” and “COND” are highlighted and the exact phrase "MTR COND" is also highlighted. Next to it is the number you needed: HC35SL231.

### **iii. Search for Models with Specific Components {HV}**

If you would like to identify every model that uses this particular part, please do the following:

#### **Example #13:**

1. <OPEN QUERY>
2. Type <HC35SL231>
3. Click <OK>

You can briefly scan the 94 occurrences of this number by clicking your right scroll bar downwards. This feature can be helpful in determining whether or not to add an item to your inventory.

### **iv. Link OEM Part Numbers Back to XREF™ {HV}**

What if you need to replace a # HC35SL231 motor in a 38EH030300SM Carrier unit?

#### **Example #14:**

1. Click on any occurrence of <HC35SL231> within the 94 records to go back to XREF™ with all of your options.

Carrier's older model numbers can replace the original motor “HC35SL231”. In addition to showing OEM possibilities, you may consider A. O. Smith's # FSE1018S as a possible replacement.

10

#### **By XREF™ Publishing Co., Inc.**

Phone# (360) 385-4279 (8am-5pm PST), Fax # (360) 385-4417

[info@xrefpub.com](mailto:info@xrefpub.com), [www.xrefpub.com](http://www.xrefpub.com)

(c) Copyright 1990-2012, XREF™, All Rights Reserved

Manual\_W112X-H.DOC

## **XREF™ “HVAC” ENCYCLOPEDIA MANUAL**

Specifications of the requested motor (if available) may also be seen. It can be very helpful in case there are no stated possible replacements. (Please refer back to Example #5.)

2. To go back to the “HVAC” Database, click on your “HV” icon at the top.

### **v. Define Abbreviations {HV}**

On your “HVAC” screens, you will see part descriptions listed in abbreviated forms. Most of these abbreviations are logged in an internal dictionary for easy identification. A very few examples include: SW PRESS, SW FAN, MTR BLW, VLV GAS.

#### **Example #15:**

1. Click on your <QUERY TOOL> drop-down menu on the bottom
2. Scroll down to find “38EH030300SM” and click on it
3. Simply click on an abbreviation to find out what it means
4. Click on <GO BACK> key (top single left arrow) to return to previous screen

### **vi. No Parts Matches Found! {HV}**

Maybe you're seeking possible replacements for a model's control box (BOX CTR) # 38EN400484 (top left):

#### **Example # 16:**

1. Locate and click on <38EN400484>

If you click on an abbreviation or a part that will not have a cross-reference, a window will open up with this message: “**No parts matches found!**” Click on “OK” and you will remain in your current screen. Now you know to order the part directly from the original equipment manufacturer.

### **c. Supplier Database {SU}**

Let's assume that you are a distributor in the state of New York and wish to locate a Lennox distributor in Ohio to accommodate your customer who is doing business in Ohio:

#### **Example # 17:**

1. Click on your <SU> icon to enter the SUPPLIER database
2. <OPEN QUERY>
3. Type <LENNOX> and press <SPACE BAR>
4. Type <OH> (for Ohio state)
5. Click <OK>

11

### **By XREF™ Publishing Co., Inc.**

Phone# (360) 385-4279 (8am-5pm PST), Fax # (360) 385-4417

[info@xrefpub.com](mailto:info@xrefpub.com), [www.xrefpub.com](http://www.xrefpub.com)

(c) Copyright 1990-2012, XREF™, All Rights Reserved

Manual\_W112X-H.DOC

## **XREF™ “HVAC” ENCYCLOPEDIA MANUAL**

You have located 3 Lennox dealers in Ohio for your customer.

### **d. Ice Database {IC}**

This database contains icemakers and functions the same as the “HVAC” database.

### **e. MSDS Database {MS}**

XREF™ is enhanced with the electronic cataloging of Material Safety Data Sheets (MSDS). You may recall and print out any of the MSDS information screens available in the database. To access MSDS information, you MUST be in “MSDS”.

#### **Example # 18:**

1. Click on your <MS> icon to enter the MSDS database
2. <OPEN QUERY>
3. Type <R-22> <SPACE BAR>
4. Type <30> <SPACE BAR> Type <LBS>
5. Click <OK>

You are presented with this product's MSDS information. To print this:

6. Click on your <PRINT> icon and follow the prompts.

### **f. COMP Database {CO}**

XREF™ is now enhanced with the ability to provide competitive analysis on equipment for many manufacturers in the HVAC industry. The "COMP" database will give you instant assistance on possible replacements based on specifications of the original equipment.

#### **i. Search for Specifications on OEM Equipment {CO}**

Let's assume one of your customers needs to replace a Lennox model # HP25-261 with a Trane unit:

#### **Example #19:**

1. Click on your <CO> icon
2. <OPEN QUERY>
3. Type <HP25-261>
4. Click <OK>

You will be presented with most of the important technical specifications of this unit, including brand, description, tonnage, SEER, etc.

### **By XREF™ Publishing Co., Inc.**

Phone# (360) 385-4279 (8am-5pm PST), Fax # (360) 385-4417

[info@xrefpub.com](mailto:info@xrefpub.com), [www.xrefpub.com](http://www.xrefpub.com)

(c) Copyright 1990-2012, XREF™, All Rights Reserved

# **XREF™ “HVAC” ENCYCLOPEDIA MANUAL**

## **ii. Search for OEM Equipment by Specifications {CO}**

Once you have learned about important specifications on the unit you need to replace, you may put these back into COMP for final analysis:

### **Example #20:**

1. <OPEN QUERY>
2. Type <Split System Heat Pump> <SPACE BAR>
3. Type <2T> <SPACE BAR>
4. Type <12.0> <SPACE BAR>
5. Type <TRANE>
6. Click <OK>

You are presented with 1 Trane model number that meets and/or exceeds the original specifications.

## **IV. Features in Depth**

### **a. Excluding Queries/Narrowing Search**

How would you exclude certain brands from the screen that you do not have access to?

### **Example # 21:**

1. Click <XR>
2. <OPEN QUERY>
3. Type <D-156>
4. Press <SHIFT 6> (for the ^ or “caret” key)
5. Type in <GE> (for General Electric) Click <OK>

XREF™ excluded every entry where the "GE" code was present. Let's take it one step further:

6. <OPEN QUERY> <PREV> <END KEY>
7. Type in <UNIV> (for Universal Electric)
8. Click <OK>

XREF™ found only 23 occurrences where "D-156 UNIV" matched without GE part numbers.

**ALWAYS, WITH NO EXCEPTIONS, TRY TO NARROW YOUR SELECTION TO EXACT REPLACEMENTS!** To achieve that, please:

9. Single Click on any occurrence of the searched part number

13

### **By XREF™ Publishing Co., Inc.**

Phone# (360) 385-4279 (8am-5pm PST), Fax # (360) 385-4417

[info@xrefpub.com](mailto:info@xrefpub.com), [www.xrefpub.com](http://www.xrefpub.com)

(c) Copyright 1990-2012, XREF™, All Rights Reserved

Manual\_W112X-H.DOC

## **XREF™ “HVAC” ENCYCLOPEDIA MANUAL**

Your selection will be narrowed down to very close or exact replacements only.

### **b. Using Wild Cards: ? and \***

Let's try out a particular feature in the program that allows you to find information on incomplete part numbers. In this example, assume that you have a lengthy equipment part number that reads: 3ART\_S2\_. (Unreadable characters are substituted by “\_”).

#### **Example # 22:**

1. Click <XR> <OPEN QUERY>
2. Type in <3ART?S2?>
3. Click <OK>

XREF™ found 7 occurrences where a question mark (?) substituted a character.

#### **Example # 23:**

What happens when more than one character is illegible?

1. <OPEN QUERY>
2. Type in <3ART\*> (asterisk)
3. Click <OK>

The computer found 596 matches where the first four characters are 3ART. The (\*) symbol can substitute 40 characters. Use the (\*) wildcard in any database to substitute any alpha/numeric characters.

#### **Example # 24:**

What happens when you cannot find an exact RPM replacement? Let's search for a motor meeting the following specs: 3/4HP, 460V, PSC, REV, BB, 1080RPM, FASCO

1. Click on <SP> to open up your Specifications Query
2. Type <3/4HP> <SPACE BAR>
3. Type <460V> <SPACE BAR>
4. Type <PSC> <SPACE BAR>
5. Type <BB> <SPACE BAR>
6. Type <REV> <SPACE BAR>
7. Type <1080RPM>

The computer found no matches due to the fact that a 1080RPM motor does not exist as described in the above example. Continue our Query with the following:

8. Using <LEFT ARROW>, change 1080RPM into 10\*RPM

14

### **By XREF™ Publishing Co., Inc.**

Phone# (360) 385-4279 (8am-5pm PST), Fax # (360) 385-4417

[info@xrefpub.com](mailto:info@xrefpub.com), [www.xrefpub.com](http://www.xrefpub.com)

(c) Copyright 1990-2012, XREF™, All Rights Reserved

Manual\_W112X-H.DOC

## **XREF™ “HVAC” ENCYCLOPEDIA MANUAL**

The computer will search for data that meets the criteria of a 1001 to 1099 RPM speed range. You may also safely accept a 2-speed (2SPD) motor (1320-1075 RPM).

9. Press <END> key
10. Type <FASCO>
11. Click <OK> to view data

XREF™ found 3 matches that met the above criteria.

### **c. Using ~ (tilde) for EITHER/OR**

Use the ~ (tilde) command to search for records containing either one brand or another in the same record. Records containing both requests will be excluded. If you Query <JS~RS>, you will request records that have either JS (Johnstone Supply) **or** RS (Robert Shaw) brands in them but **exclude records that contain both**.

### **d. Using | (AND/OR)**

Use your | (SHIFT backslash) key to query one or more items. The results will show records with only one or both brands request. For example, if you typed this query: <JS|RS>, you will request records with **only** JS abbreviations, records that have **only** RS abbreviations, and those records that contain **both** JS and RS brands.

### **e. Define Abbreviations**

When you do not understand the meaning of an abbreviation like "JC", please do the following:

#### **Example # 25:**

1. Click on top <XR> icon
2. <OPEN QUERY>
3. Type in <ABBREV JC>
4. Click on <OK>
5. The computer will immediately display its meaning.

When you do not understand the meaning of an abbreviation like "COPE", please do the following:

#### **Example # 26:**

1. <OPEN QUERY>
2. Type in <ABBREV COPE>
3. Click on <OK>
4. The computer will immediately display its meaning.

### **f. Define Codes**

15

### **By XREF™ Publishing Co., Inc.**

Phone# (360) 385-4279 (8am-5pm PST), Fax # (360) 385-4417

[info@xrefpub.com](mailto:info@xrefpub.com), [www.xrefpub.com](http://www.xrefpub.com)

(c) Copyright 1990-2012, XREF™, All Rights Reserved

Manual\_W112X-H.DOC

# **XREF™ “HVAC” ENCYCLOPEDIA MANUAL**

Throughout the database, you will see abbreviated forms of expressions categorized as CODES:

## **Example # 27:**

"CODE FASCO 22" means "USE CW SHAFT". To find an immediate explanation for this code:

1. <OPEN QUERY>
2. Type in <CODE FASCO 22>
3. Click <OK> and scroll down to the main code record to see its meaning

When would you use the CODE or ABBREV FORMAT?

When you are searching for the meaning of text that starts with "CODE XXXXX", you must use the CODE format (Example #27). Anything other than CODES will be available in ABBREV format (Examples #25 & 26).

## **g. Printing Capabilities**

"MSDS" database is the only database that is printing-enabled.

## **V. How do I exit from XREF™?**

Cancel any open Query screens and click on your top right most "X" to exit from XREF™.

## **VI. Helpful Hints**

It may look complicated at first, but as you can see now, the software is quite simple to use. Using the above few examples, you can learn how to create your own queries for the databases. We are confident that once you overcome the initial introduction to XREF™, it will become your "partner" for everyday operations.

### **a. Training**

We would also like to call your attention to the importance of training. Not fully utilizing a program or tool you have at your disposal will shortchange you as well as your organization. It is to your advantage to learn how to efficiently operate XREF™ and we are here to help you. Please call us for an over-the-phone training or any additional help!!

### **b. Uniformity of Part Numbers**

For uniformity of part numbers, certain forms of numbers have been modified.

Example # 1: **LETTER "O" BECOMES A ZERO "0"**

Example # 2: Dashes (-) are usually removed between a number and a letter

16

### **By XREF™ Publishing Co., Inc.**

Phone# (360) 385-4279 (8am-5pm PST), Fax # (360) 385-4417

[info@xrefpub.com](mailto:info@xrefpub.com), [www.xrefpub.com](http://www.xrefpub.com)

(c) Copyright 1990-2012, XREF™, All Rights Reserved

Manual\_W112X-H.DOC

## **XREF™ "HVAC" ENCYCLOPEDIA MANUAL**

Example # 3: GE part # WJ0013X0001 will be as "WJ13X1"  
Example # 4: Universal motor # 90 is identified as "U-90"  
Example # 5: Gibson # G000162672 will be as "G162672"  
Example # 6: Fasco motor D158 will be as "D-158"  
Example # 7: Norge # 35-0023 will be as "35-23"  
Example # 8: Amana # 53201-05 will be as "53201-5"  
Example # 9: Amana # 53201-005 will be as "53201-5"  
Example # 10: Frigidaire # 0817487 will be as "817487"

## **VII. We Value Your Opinion: Want Your Feedback!!!**

**E-mail, Call, Fax or Snail Mail your suggestions/questions to us at:**

XREF™ Publishing Co., Inc.  
810 Water St. #2  
Port Townsend, WA 98368-5769  
Phone# (360) 385-4279, Fax# (360) 385-4417  
Email: [info@xrefpub.com](mailto:info@xrefpub.com), URL: [www.xrefpub.com](http://www.xrefpub.com)

Thank you for subscribing to the HVAC/R Encyclopedia. We are convinced that in no time, XREF™ "HVAC" will become an invaluable tool for your everyday data cross-referencing adventures!

17

**By XREF™ Publishing Co., Inc.**  
Phone# (360) 385-4279 (8am-5pm PST), Fax # (360) 385-4417  
[info@xrefpub.com](mailto:info@xrefpub.com), [www.xrefpub.com](http://www.xrefpub.com)  
(c) Copyright 1990-2012, XREF™, All Rights Reserved

Manual\_W112X-H.DOC